



## **Team Based Approach to Caring for Children with Complex Airway and Esophageal Conditions**



Seattle Children's®

# Welcome

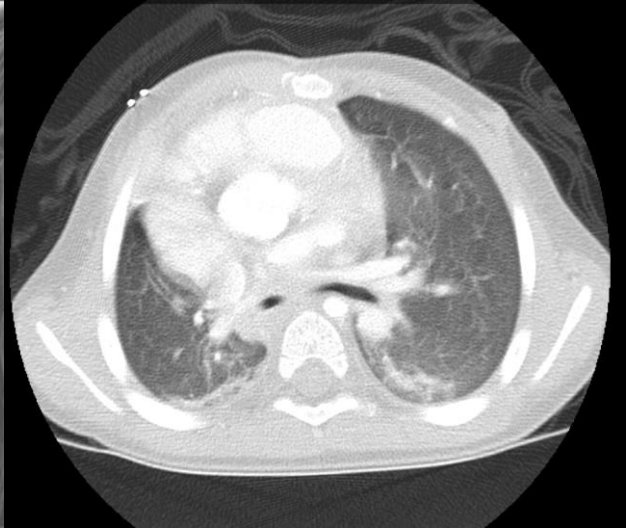
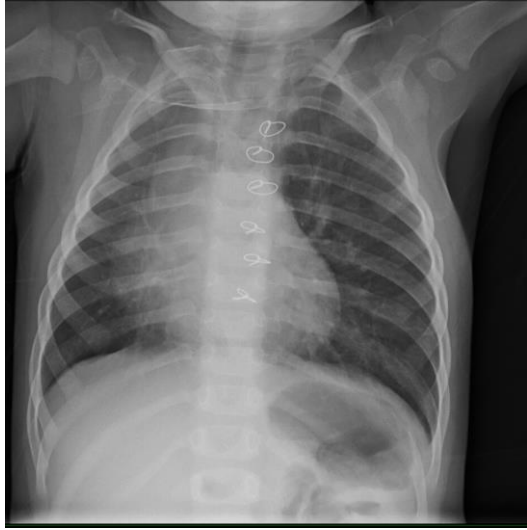
Thank you for attending the CME today. Our program is designed to offer family-centered care where patients see multiple specialists at each visit. Our goal is to work as a coordinated team to have a better outcome for our patients. The Airway and Esophageal Center team is pioneering virtual surgical planning techniques for complex airway and esophageal procedures and is deeply involved in research that helps set the standard of care for our patients.



# *Case Study: 8 y/o with Persistent Shortness of Breath*

- VACTRL Association
- Tetralogy of Fallot s/p repair
- Right pulmonary artery hypoplasia
- OSA s/p T&A, lingual tonsillectomy
- Most recent PSG with moderate OSA
- Pharyngeal dysphagia





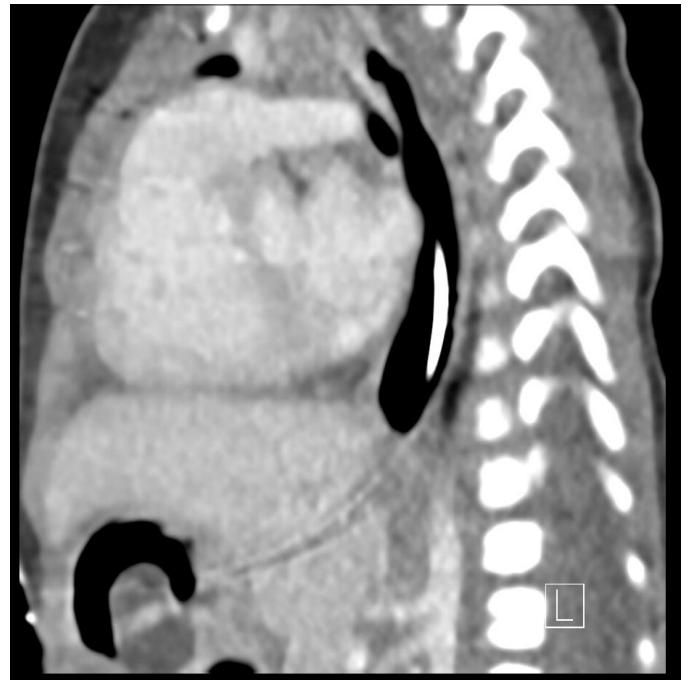


# Case Study: Toddler with recurrent Pneumonias

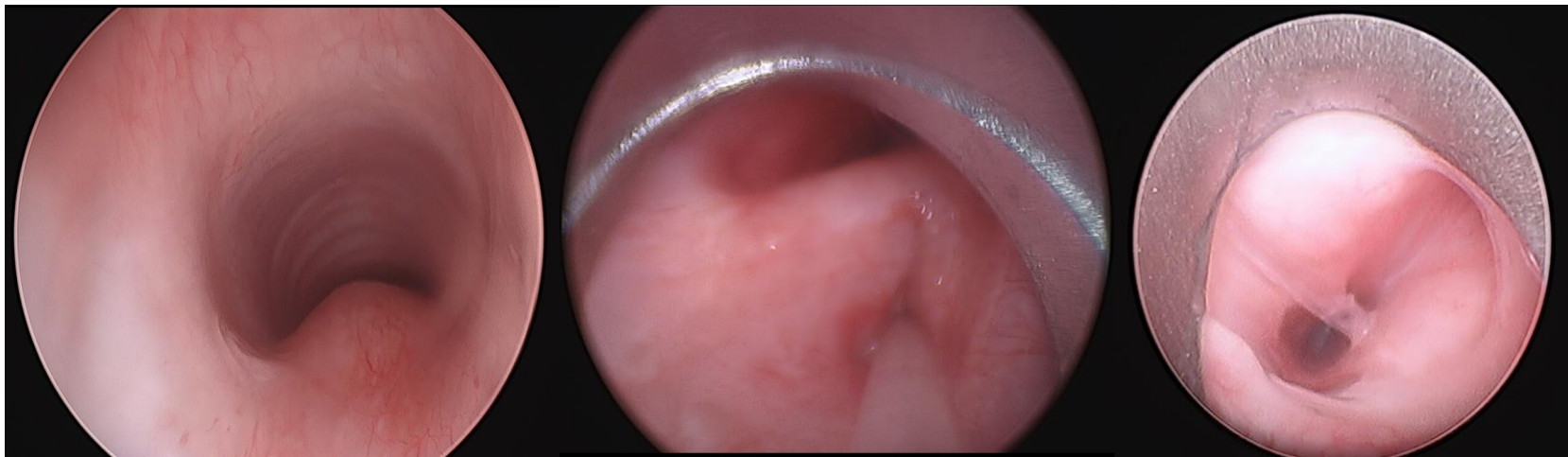
- EA-TEF s/p repair
- Tetralogy of Fallot s/p repair
- VACTERL
- Tracheobronchomalacia
- *NSD1* mutation
- Pharyngeal dysphagia









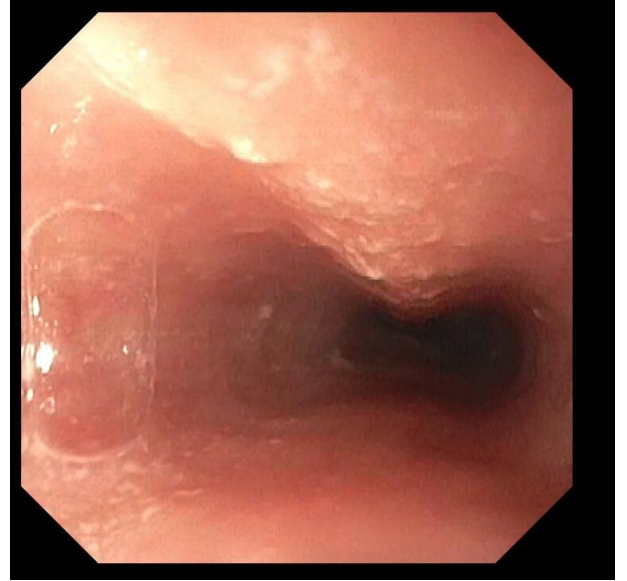
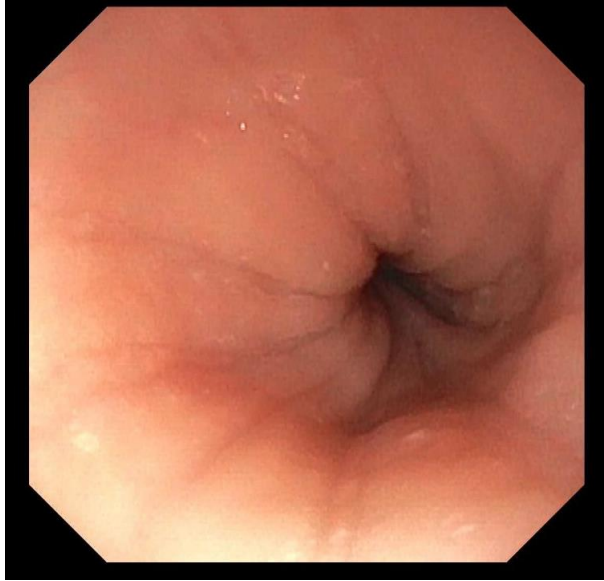


# *Case Study: Recalcitrant Dysphagia*

- Pharyngeal dysphagia
- Atopic dermatitis



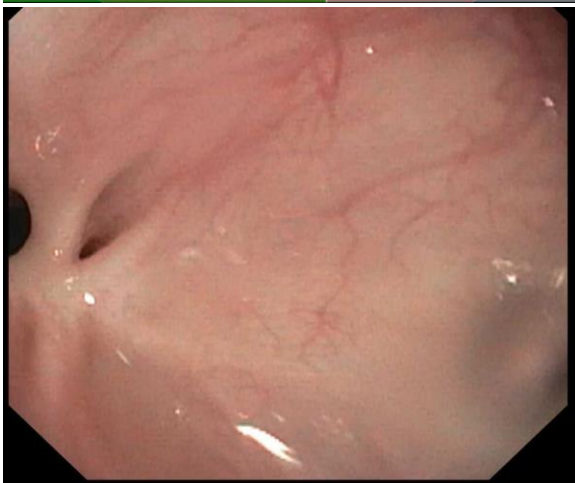
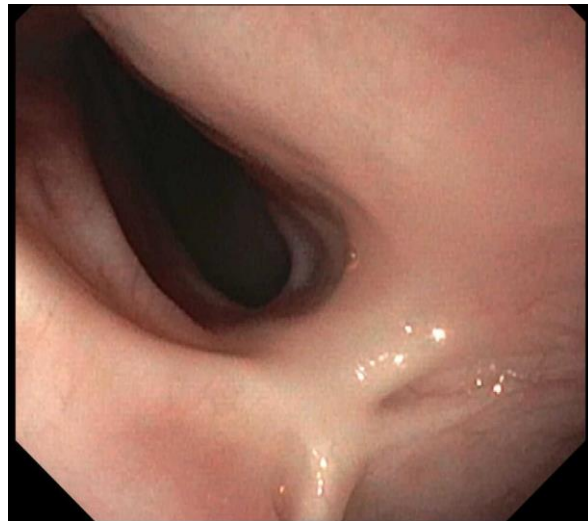
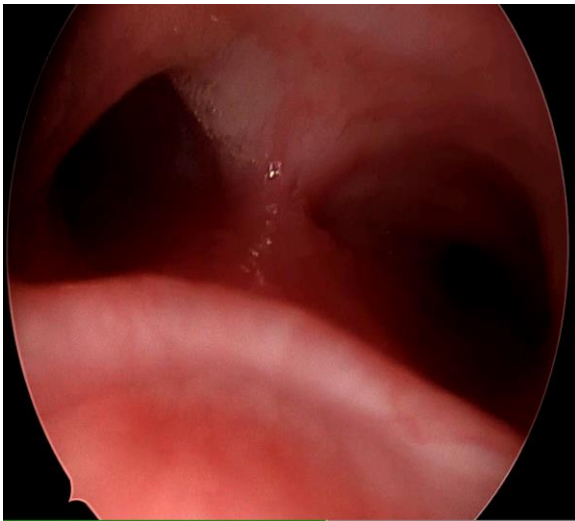
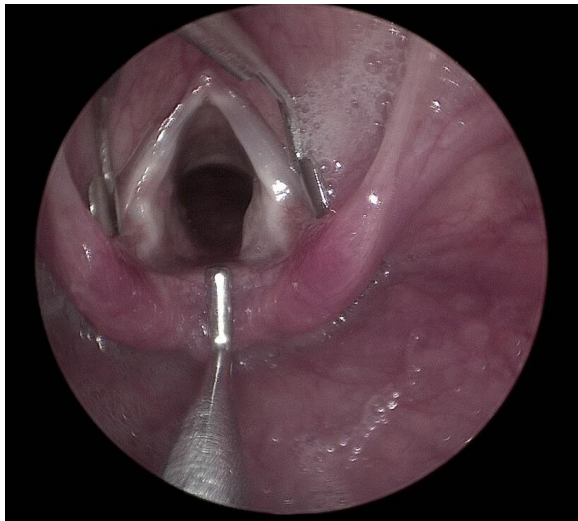




# *Case Study: TEF with Dyspnea and Poorly Controlled Asthma*

- TEF s/p repair
- Pharyngeal dysphagia
- Recurrent respiratory infections
- GERD





Seattle Children's



**Matthew  
Abts, MD**



**Jake  
Dahl, MD**



**Matt  
Dellinger, MD**



**Sarah Hofman  
DeYoung, MD**



**Kaalan  
Johnson, MD**



**Michael  
McMullan, MD**



**Nicole  
Pattamanuch, MD**



**Michael  
Pickens, DO**



# Referring future patients

- Fax referrals to 206-985-3121 or 866-985-3121: Include relevant previous test results (i.e., biopsy, endoscopy, VFSS, radiology, audiogram, etc.)
- Contact Us Beatriz Cruz, Program Coordinator non-urgent, non-clinical questions: 206-987-5369 You can also email us at [Airway.EsophagealCenterCoordinator@seattlechildrens.org](mailto:Airway.EsophagealCenterCoordinator@seattlechildrens.org)









**Seattle Children's**<sup>®</sup>  
HOSPITAL • RESEARCH • FOUNDATION

Hope. Care. Cure.